

# Comparison of Four Trap and Lure Combinations to Monitor Conspere Stink Bug in Pears



Rachel Elkins

Pomology Farm Advisor, Lake and Mendocino Counties  
University of California Cooperative Extension  
Lakeport, California

# Design

- 4 treatment combinations
  - traps: APT Pyramid, Aldrich double-cone
  - lures: APT IPM Lure, Trece Pherocon
- 4 orchards (3 pear, 1 apple)
- RCBD, 3 reps per orchard



UC Statewide IPM Project  
© 2000 Regents, University of California



9/8  
9/13  
9/19  
9/25  
10-8  
10-12-2  
10-18-2  
10-27-2



# Trapping Methods

- Traps placed in late May (late due to rain)
- Placed 2<sup>nd</sup> row in from edge, down row, 25' apart
- Double-cone in tree crotch, pyramid anchored to ground with rebar
- Checked weekly, CSB removed
- Lures changed every 45 days



Orchard #3, Kelseyville, Lake County

# Additional Methods

- Beating tray samples, 50 trees in transect across orchard
- Visual observations for CSB, damage
- Bin damage in relation to trap trees (2 orchards)
- Zalom-Cullen °D model (biofix May 26)
  - peak nymphal presence (1-3 instars) @ 590°D



# Conspere Stink Bug Trap & Lure Combinations

Orchard #1, Kelseyville, Lake County - 2005

<b>Trap + Lure</b>	<b>Total CSB/Season<sup>1</sup></b> (avg./3 reps)
Pyramid + APT	56.3 A
Double-Cone + APT	42.7 B
Double-Cone + Trece	9.7 C
Pyramid + Trece	2.3 D

Transformed means separated by Tukey HSD,  $p=.05$  (actual  $p=.0006$ )

<sup>1</sup> Danitol applied for CSB 7/18/05

# Consperse Stink Bug Trap & Lure Combinations

Orchard # 2, Kelseyville, Lake County - 2005

<b>Trap + Lure</b>	<b>Total CSB/Season</b>
Pyramid + APT	84.7 A
Double-Cone + APT	27.0 B
Pyramid + Trece	14.3 C
Double-Cone + APT	9.0 D

(actual p=.0010)

# Conspere Stink Bug Trap & Lure Combinations

Orchard # 3, Kelseyville, Lake County - 2005

<b>Trap + Lure</b>	<b>Total CSB/Season</b>	
Double-Cone + APT	62.0	A
Pyramid + APT	20.0	B
Pyramid + Trece	2.6	C
Double-Cone + Trece	3.3	D

(actual  $p=.0007$ )

# Consperse Stink Bug Trap & Lure Combinations

Orchard # 4 (apples), Lakeport, Lake County - 2005

<b>Trap + Lure</b>	<b>Total CSB/Season<sup>1</sup></b> (avg./3 reps)
Double-Cone + APT	5.7
Pyramid + APT	1.7
Pyramid + Trece	0.7
Double-Cone + Trece	0.3

<sup>1</sup>Danitol applied for boxelder bug 6/7/05

NS

# Conspere Stink Bug Trap & Lure Combinations

All Orchards Combined, Kelseyville, Lake County - 2005

<b>Trap + Lure</b>	<b>Total CSB/Season (n=12)</b>	
Pyramid + APT	41	A
Double-Cone + APT	34	A
Double-Cone + Trece	5	B
Pyramid + Trece	5	B

(actual p=.0001)

# Separation of Trap versus Lure Type

	F-Ratio (n=24)	P-Value	LS mean	
Pyramid	.01	0.94	22.8	A
Double-Cone	-----	-----	19.7	A
APT	28.62	0.0000	37.4	A
Trece	-----	-----	5.2	B
Block	NS	>>.05	-----	----

(Transformed means separated by Tukeys HSD, p=.05)

# 2005 Stink Bug Trap Catches

## Weekly Average of 3 Traps

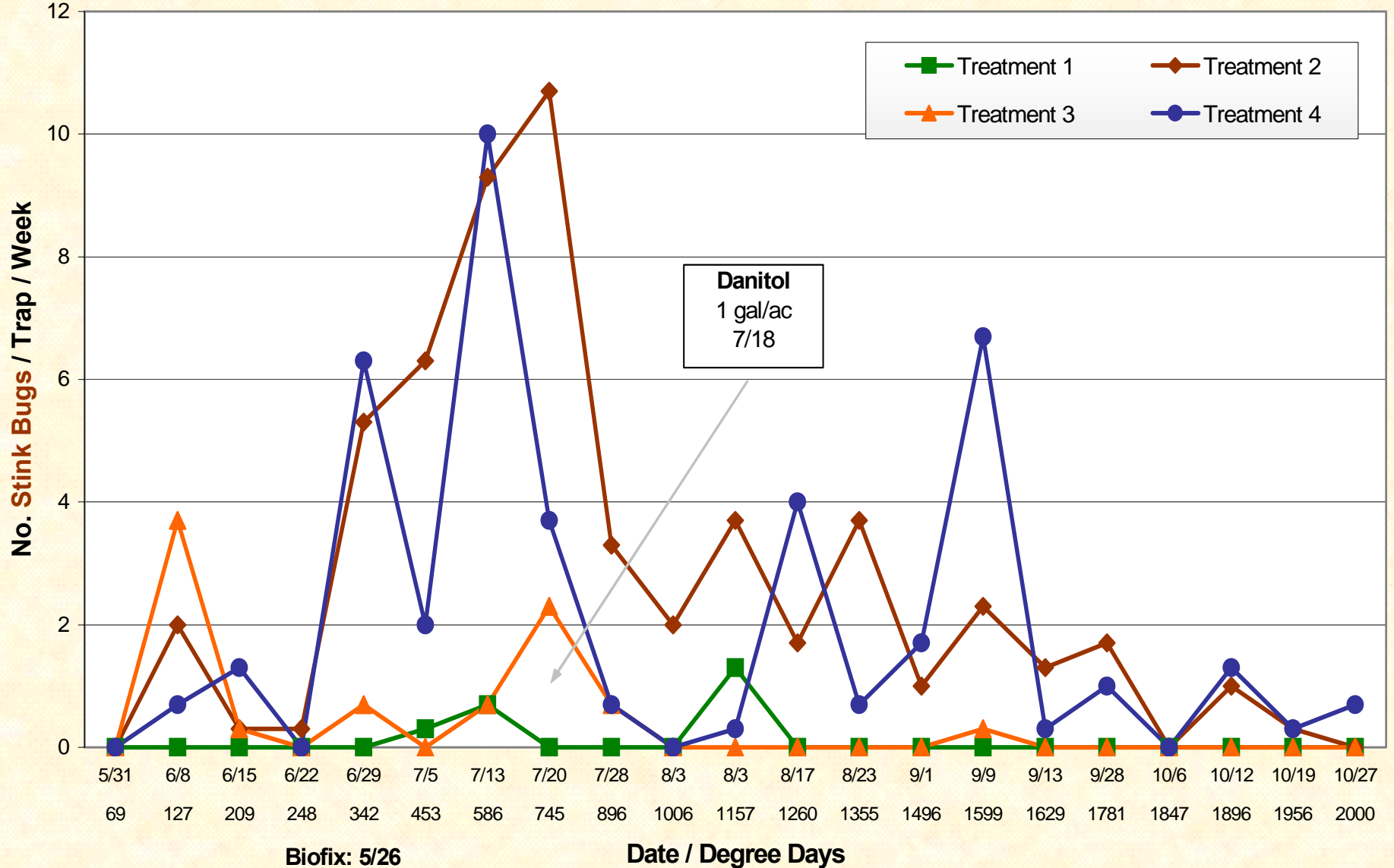
### Orchard # 1, Kelseyville, Lake County

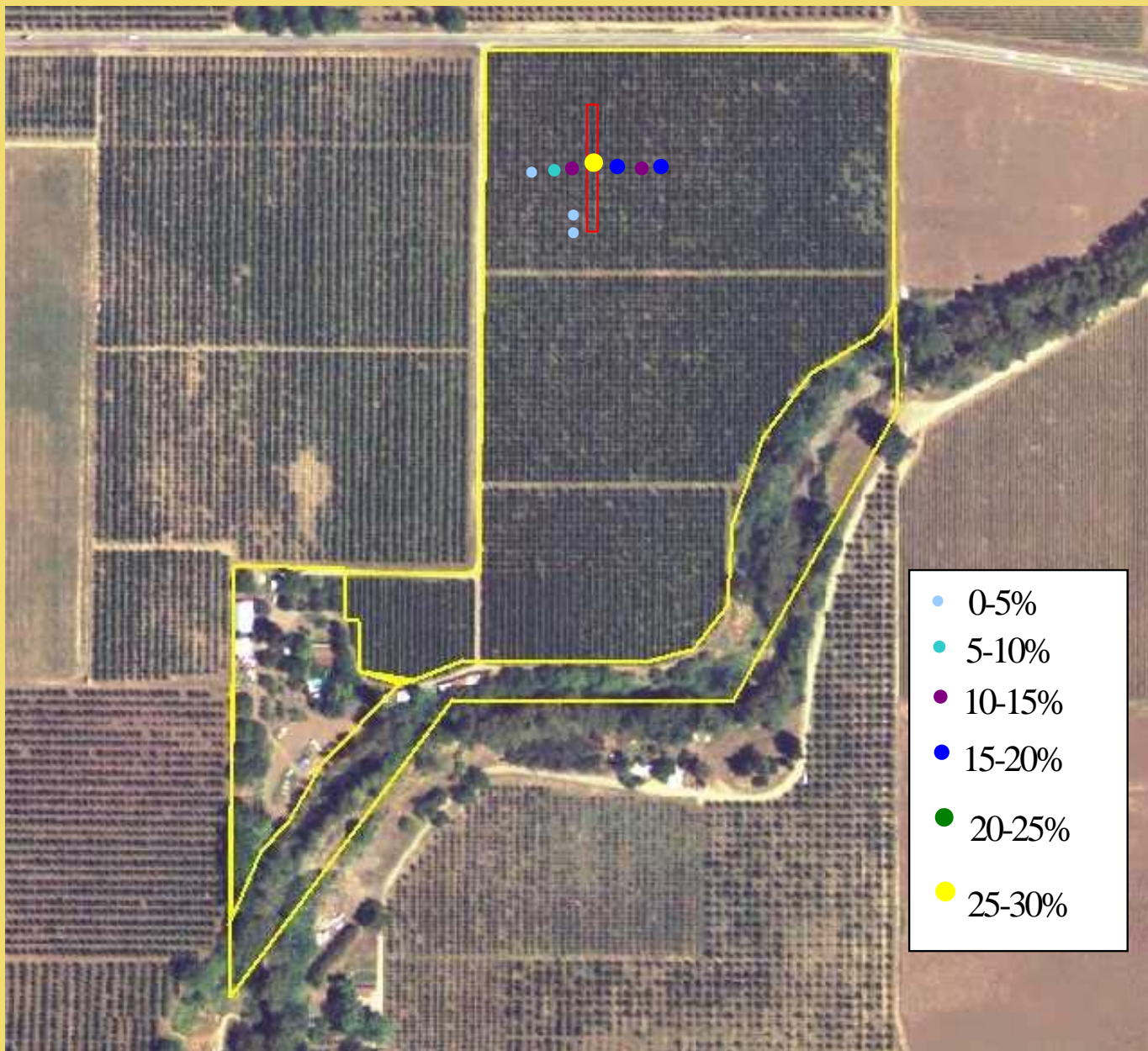
**Treatment 1:** Cone + Trece lure

**Treatment 2:** Cone + APT lure

**Treatment 3:** Jar + Trece lure

**Treatment 4:** Jar + APT lure





Damage Gradient Away From Traps  
Orchard #1, Kelseyville, Lake County



# Damage Gradient Away From Traps

Orchard #1, Kelseyville August 29, 2005

No. Rows from Trap	Damage (%/200 fruit)
Trap Row	23, 25, 28.5
1-2	
East	20,23,7.5*,2.5*,15
West	14
*>8 trees south of traps	
3-4	
East	-----
West	8,7
4-5	
East	13
West	-----
6-7	
East	19.5
West	3.5
≥8	
East	-----
West	2.0 (edge row)

# Conclusions

- No significant difference between trap types
- Very highly significant difference between lure types
- Damage worst in trap trees, decreases with distance from traps
- Model coincided relatively well with peak CSB catches in two orchards (sprayed June 13-20)

# 2006 Plans

- Deploy traps by late March
- Place double cone traps with APT lures outside and inside orchard
- Monitor to determine if populations (and damage) can be directed outside the orchard
- Continue to run the Zalom-Cullen model
- Continue visual observation, damage counts (earlier biofix)
- No beating trays (poor results for 3 years)

# Acknowledgements

## **UCCE Field Staff:**

Jim Benson

Steve D'Agostini

Casey Grubb

Patty McCleary

Catherine Rose

## **Growers/PCA's:**

Joe Conant

Don Eutenier

Greg Hanson

Diane Henderson

Bill Oldham

Andy & Pat Scully

Broc Zoller

## **Funding:**

Pear Pest Management Research Fund

Gerber Products Company

## **Advisory:**

Jay Brunner, WSU

Derek Czokajlo, APT

Frank Zalom, UC Davis

## **Presentation:**

Steve D'Agostini

Nicole Gentry

**THANK YOU!!**

